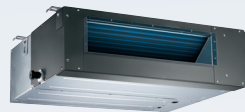


LIGHT COMMERCIAL INVERTER SYSTEMS



Three indoor units with
one condensing unit to match



Lennox® 16 SEER Mini-Split systems feature R-410A refrigerant for excellent performance and less environmental impact.



America's Premier Climate Comfort Brand since 1895

Discover the smart, simple way to provide comfort to any room – all year long.

Lennox® light commercial inverter systems allow efficient heating and cooling of a room or zone, without the need for ductwork. Made up of a compact indoor unit, an outdoor unit and a remote control, these systems offer a choice of configurations and can work across a range of applications.



Features designed for reliable performance

Inverter technology matches heating and cooling output to demand for quieter, more efficient operation.

AHRI certification ensures equipment will perform according to its capacity and efficiency specifications.

Streamlined, compact design blends with any interior and décor.

Remote control with Lennox' I-Feel feature uses a built-in temperature sensor to deliver enhanced comfort.

Programmable operation with 24-hour on/off timer function lets the unit turn itself off when not needed for greater efficiency.

Auto restart restores programmed settings in the event of a power outage.

Self-diagnosis detects system errors and displays them on an LED screen on the indoor unit.

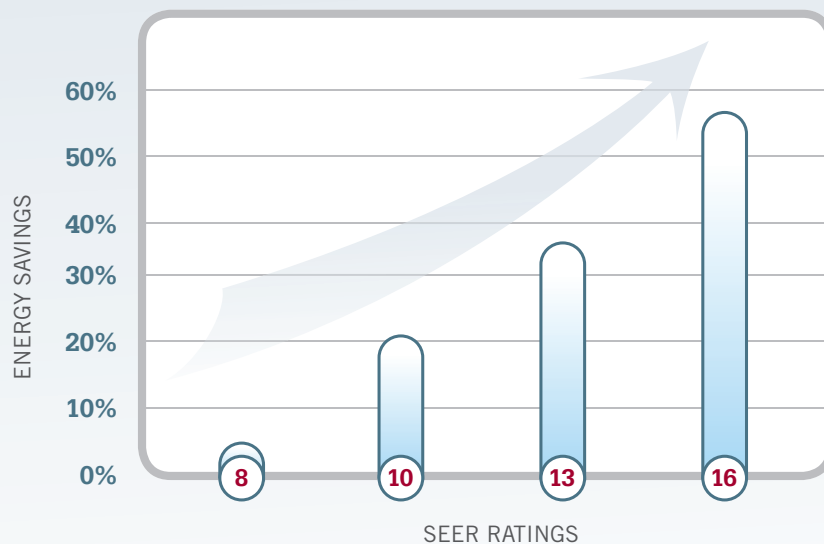
5-speed fan in the outdoor unit helps keep operating sounds to a minimum.

R-410A refrigerant provides excellent performance with reduced environmental impact.

Exceptional precision for outstanding energy savings

The advanced inverter technology inside every Lennox light commercial inverter system works to keep room temperatures within 0.5°C (0.3°F) of the set point. This not only reduces temperature swings, but also increases energy efficiency. And with ratings up to 16.0 SEER,* these units can deliver significant utility savings, compared to 10-year-old units with ratings as low as 8.0 SEER.

ENERGY SAVINGS % BASED ON SEER EFFICIENCY
(Mini-Split Ductless Systems with Inverter Technology)



*SEER stands for Seasonal Energy Efficiency Ratio and is a measure of cooling efficiency. The higher the SEER, the greater your energy savings.

Indoor units

More options for increased versatility

The indoor component of the system can be installed on a floor or ceiling, depending on the configuration you choose. Each is designed to work seamlessly with an outdoor unit to deliver maximum comfort, while taking up minimal space.



Floor/Ceiling

These units can be installed on a wall and mounted close to the floor level, or mounted on the ceiling when floor space is limited. An auto air-swing vane distributes airflow both vertically and horizontally as it automatically adjusts direction. This ensures optimal air circulation, no matter where the unit is installed.



360° Cassette

Ideal for spaces with drop ceilings, cassette units mount flush with the ceiling and provide uniform air in all directions. A branch duct allows the unit to connect with a fan in an adjoining room to efficiently heat and cool both spaces.



Fan and Coil

Fan and coil units are mounted within the ceiling where they are hidden from view, leaving ample wall space for televisions, mirrors and artwork. A removable panel offers additional installation flexibility.

Complete and convenient control

Each light commercial inverter system comes with a wireless remote control that allows you to adjust the temperature from anywhere in the room. A temperature sensor built into the remote, instead of the indoor unit, ensures the air inside will always be perfectly comfortable.



Wireless Remote Control



Optional Wired Remote Controller



Optional Weekly Wired Control

Peace-of-mind protection

Standard on every unit, the memory function protects the compressor in the event of a power failure. After power has been restored, the unit will automatically resume operation at its previous settings.

A breath of fresh air

All indoor units are designed with a fresh air intake opening to help improve indoor air quality. Fresh air can enter from outside, without affecting indoor temperature.

Outdoor units

Each unit is paired with an outdoor unit

All Lennox heat pumps are designed with an intelligent anti-cold air function that automatically shuts down the indoor fan when the unit is in defrost mode. This prevents cold outdoor air from being blown into the indoor space. A 5-speed fan on each unit helps keep operating sounds to a minimum for quiet, reliable performance.



Outdoor Inverter Unit

Models and performance specifications

	MODEL #	Nominal Cooling [Btu/H]	Nominal Heating [Btu/H]	SEER Btu/W	HSPF Btu/W	Dimensions (W x D x H) mm/in	Weight kg/lb	Air Flow (H/M/L) M ³ /H CFM	Noise dB(A) (Rating) (H/M/L) dB	ESP (Pa)
CASSETTE	LICH4024160P431	23800	23800	15.8	9.5	840x840x205 33.07x33.07x8.07	20.5 45.19	1400/1250/1000 820/740/590	51/47/43	
	LICH4036160P431	36000	36000	15	9	840x840x245 33.07x33.07x9.65	25 55.12	1800/1600/1400 1060/940/820	52/47/44	
	LICH4048160P43	46000	47000	15.5	9	840x840x287 33.07x33.07x11.3	29 63.93	2020/1700/1450 1190/1000/850	52/48/44	
	Panel	-	-	-	-	950x950x55 37.4x37.4x2.17	5 11.02			

FAN & COIL	LIFHC024160P431	24000	25000	16.5	8.2	920x635x270 36.22x25x10.63	30 66.14	1380/1100/1000 810/650/590	50/47/43	70
	LIFHC036160P431	36000	36000	15	9	1140x775x270 44.88x30.51x10.63	35 77.16	2000/1600/1150 1180/940/680	51/48/44	80
	LIFHC048160P431	48000	49000	15	10	1200x865x300 47.24x34.06x11.81	45 99.21	2500/2000/1600 1470/1180/94	49/46/43	100

FLOOR CEILING	LIUH024170P431	25000	26000	17	8.9	1145x755x313 45.08x29.72x12.32	25 55.12	1500/1300/1100 880/770/650	58.5/55/52	
	LIUH036170P431	36000	36000	15	9	1360x755x313 53.54x29.72x12.32	30 66.14	1650/1400/950 970/820/560	55/48/41	
	LIUH036170P431	48000	49000	15	10	1725x755x313 67.91x29.72x12.32	38 83.78	2300/1900/1700 1350/1120/1000	57/54/52	

OUTDOOR	LIHP024000P431	24000	24000	N/A	N/A	900x315x860 35.43x12.4x33.86	61 134.48	3500 2060	61.5	
	LIHP036000P431	36000	36000	N/A	N/A	990x345x965 38.98x13.58x37.99	73 160.94	5500 3240	66	
	LIHP048000P431	48000	49000	N/A	N/A	938x392x1369 36.93x15.43x53.9	100 220.46	7200 4240	64	

	MODEL #	Liquid side/ Gas side mm(inch)	Max. pipe length m	Max. pipe length ft	Max. difference in level m	Max. difference in level ft	Charged volume (R410a)* Oz
REFRIGERANT PIPING	LIHP024000P431	Φ9.52/ Φ15.9(3/8"/5/8")	50	164	25	82	25
	LIHP036000P431	Φ9.52/ Φ15.9(3/8"/5/8")	65	213	30	98	25
	LIHP048000P431	Φ9.52/ Φ15.9(3/8"/5/8")	65	213	30	98	25

All units are 208-230V/1/60Hz
 *Adjust according to indoor and total piping
 Units rated at AHRI conditions.



HEAT PUMP SYSTEMS
WITH INVERTER TECHNOLOGY

DISTRIBUTED BY:



America's Premier Climate Comfort Brand since 1895

Visit us at www.lennox.com, or contact us at 1-877-726-0024.

© 2014 Lennox Industries Inc.
 For a complete list of the registered and common law trademarks owned by Lennox Industries Inc., please visit www.lennox.com.

10D22 12/14 PC79429