



America's Premier Climate Comfort Brand since 1895

Submittal:

Models:

LXGICH4MD01213T4 / LXGISHMD012130T4
LXGICH4MD01813T4 / LXGISHMD018130T4
LXGICH4MD02413T4 / LXGISHMD024130T4
LXGICH4MD03013T4 / LXGISHMD030130T4
LXGICH4MD03613T4 / LXGISHMD036130M4
LXGICH4MD04813T4 / LXGISHMD048130M4
LXGICH4MD06013M4/ LXGISHMD060130M4

(Refrigerant R410A)

Thank you for selecting LENNOX air conditioners.

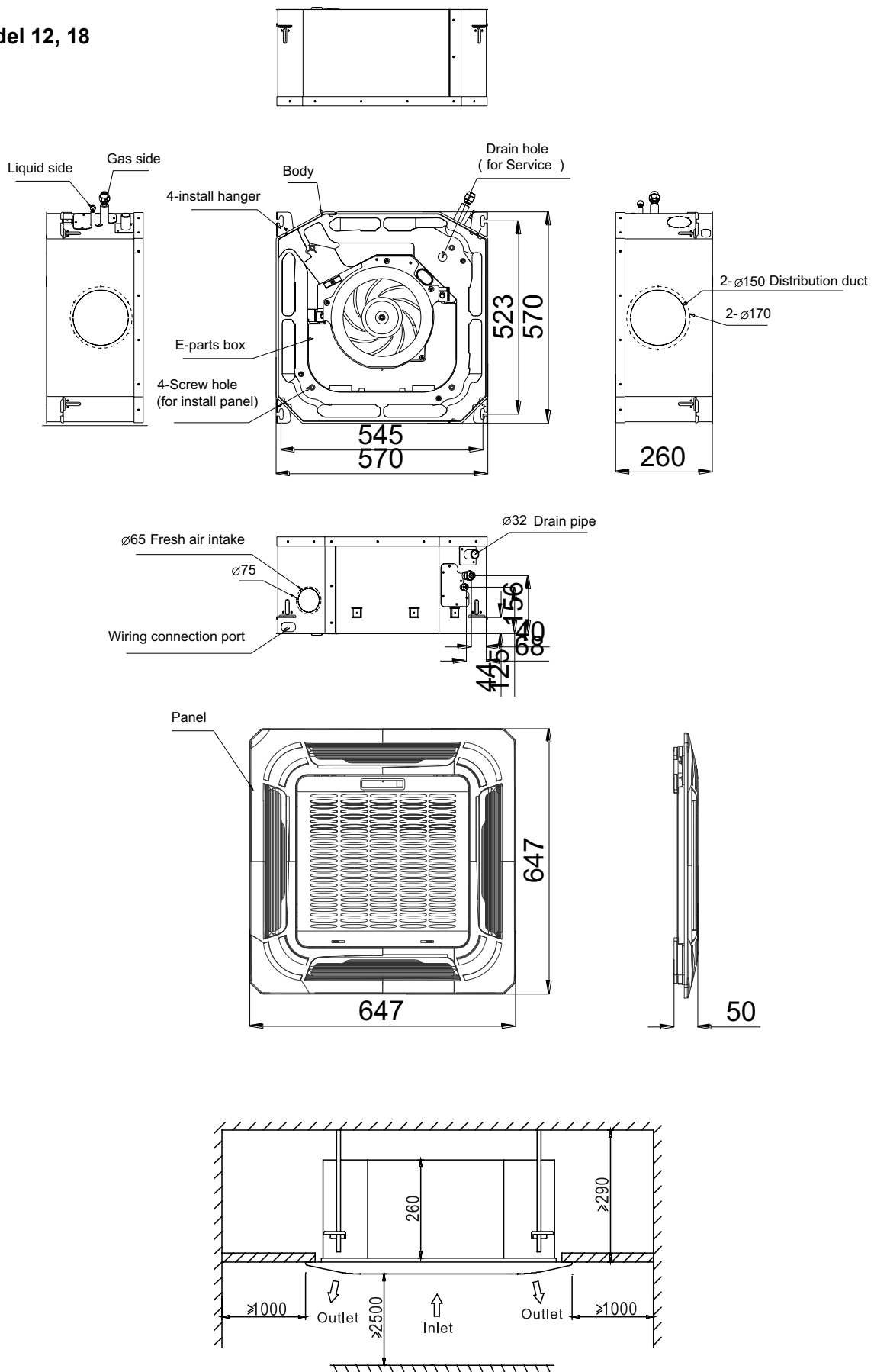
1. Specification

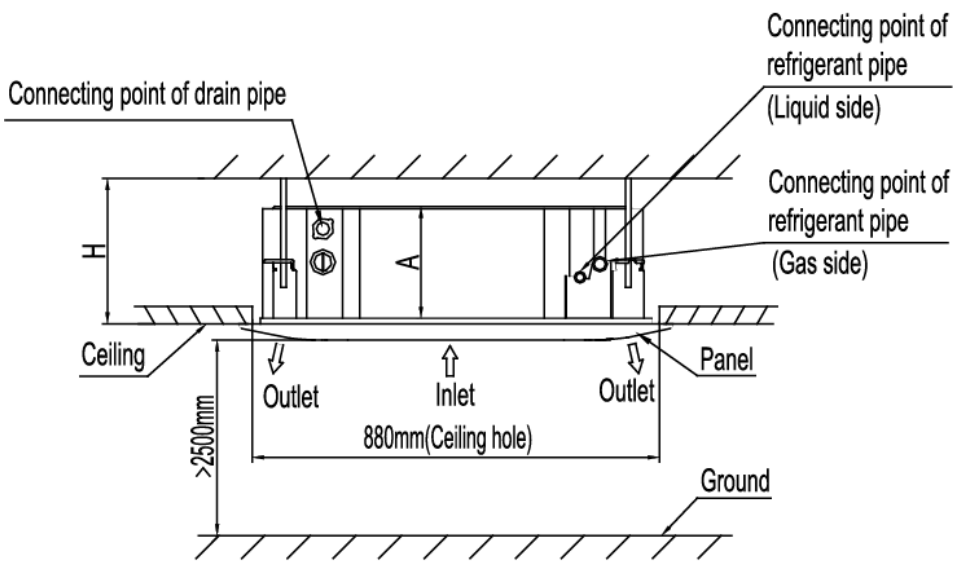
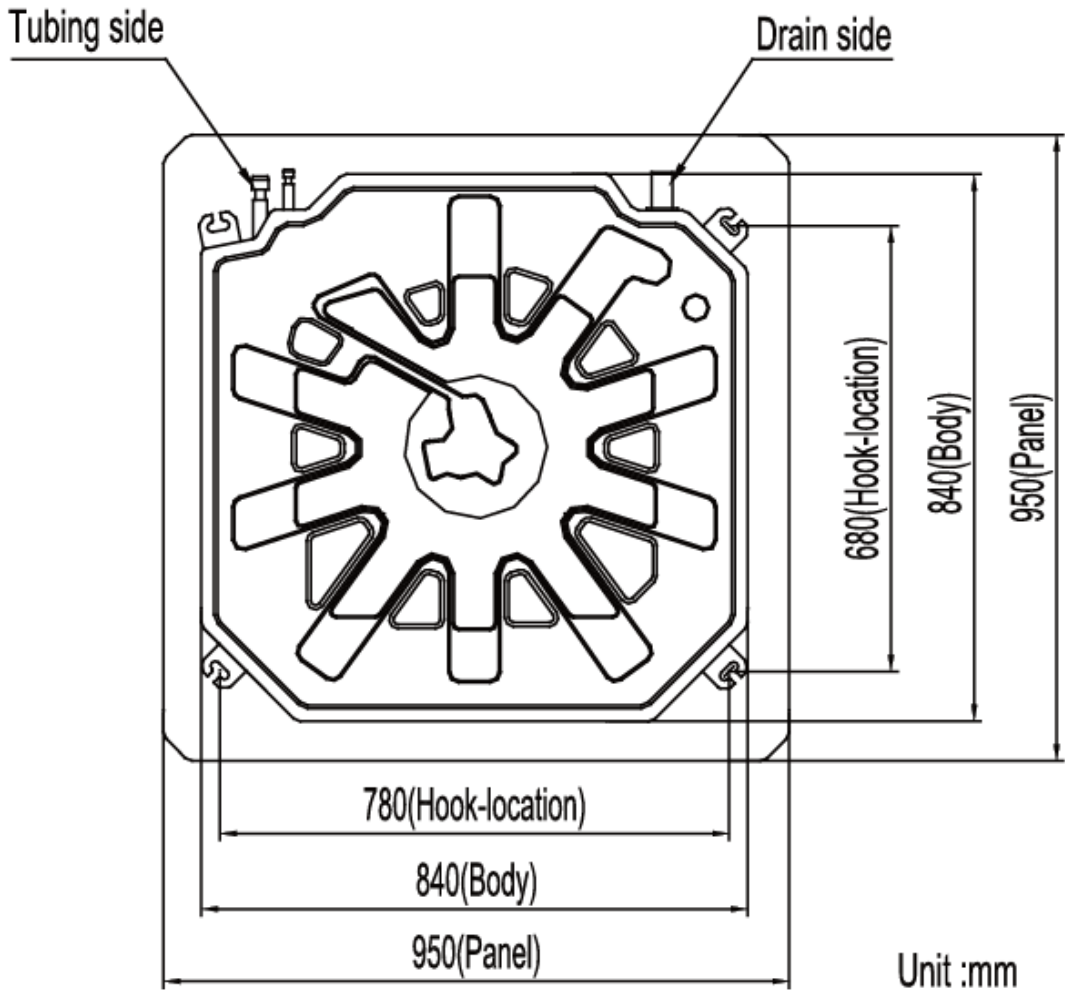
Model			LXGICH4MD01213T4	LXGICH4MD01813T4	LXGICH4MD02413T4
Code			Y5706	Y5707	Y5708
Power supply		V-ph-Hz	220~240-1-50	220~240-1-50	220~240-1-50
Cooling	Capacity	Btu/h	12000	18000	24000
	Capacity Range	Btu/h	4800-13680	4800-20000	5400-27000
	Input	W	1030	1550	2180
	Current	A	4.71	7.1	9.98
	EER	WW	3.41	3.4	3.23
Eff. Rating			A	A	A
Heating	Capacity	Btu/h	13000	19000	26000
	Capacity Range	Btu/h	4500-15300	4800-20800	5800-29000
	Input	W	1050	1530	2060
	Current	A	4.81	7.0	9.43
	COP	WW	3.63	3.64	3.7
Indoor fan motor	Motor Model		YDK15-6P	YDK37-4P	YDK80-6E
	Qty		1	1	1
	Input	w	47.1/37.8/31.1	65/46/32	110/100/90
	Capacitor	uF	1.5UF/450V	2UF/400-450V	3.5UF/450V
	Speed(hi/mi/lo)	r/min	780/670/540	875/710/570	670/550/400
Indoor coil	Number of rows		1	2	2
	Tube pitch(a)x row pitch(b)	mm	21x13.37	21x13.37	21x13.37
	Fin spacing	mm	1.3	1.3	1.5
	Fin type		Hydrophilic aluminium	Hydrophilic aluminium	Hydrophilic aluminium
	Tube outside dia.and type	mm	Φ7, Inner grooved tube	Φ7, Inner grooved tube	Φ7, Inner grooved tube
	Coil length x height x width	mm	1380x210x13.37	1370x210x26.74	1990x168x26.74
	Number of circuits		2	4	8
Indoor air flow (Hi/Med/Lo)		m ³ /h	683/530/510	800/710/560	1327/1114/871
Sound level (sound pressure)		dB(A)	42/41/38	42/41/38	42/40.5/39
Throttle type			/	/	/
Indoor unit	Dimension (W x Dx H)(body)	mm	570x570x260	570x570x260	840x840x230
	Packing (W x Dx H)(body)	mm	655x655x290	655x655x290	900x900x250
	Dimension (W x Dx H)(panel)	mm	647x647x50	647x647x50	950x950x55
	Packing (W x Dx H)(panel)	mm	715x715x123	715x715x123	1035x1035x90
	Net/Gross weight(body)	kg	15.5/18.5	18/21	24/28.3
	Net/Gross weight	kg	2.5/4.5	2.5/4.5	5/8
Design pressure		MPa	4.2/1.5	4.2/1.5	4.2/1.5
Drainage water pipe dia.		mm	ODφ25	ODφ25	ODφ32
Refrigerant piping	Liquid side/ Gas side	mm	Φ6.35/Φ12.7(1/4"/1/2")	Φ6.35/Φ12.7(1/4"/1/2")	Φ9.52/Φ15.9(3/8"/5/8")
	Controller		RG51Q1/BGE	RG51Q1/BGE	RG51Q1/BGE
Operation temperature	Cooling	℃	≥17	≥17	≥17
	Heating	℃	≤30	≤30	≤30

Model			LXGICH4MD03013T4	LXGICH4MD03613T4	LXGICH4MD04813T4	LXGICH4MD6013M4
Code			Y5709	Y5710	Y5711	Y5712
Power supply		V-ph-Hz	220~240-1-50	220~240-1-50	220~240-1-50	220~240-1-50
Cooling	Capacity	Btu/h	30000	36000	46000	55000
	Capacity Range	Btu/h	8100-35800	9800-42310	11600-51200	16500-60500
	Input	W	2710	3280	4160	5040
	Current	A	12.4	5.7	7.18	8.7
	EER	WW	3.24	3.22	3.24	3.2
	Eff. Rating		A	A	A	A
Heating	Capacity	Btu/h	32000	37000	50000	58000
	Capacity Range	Btu/h	9300-40900	12600-45050	14330-54600	17400-63800
	Input	W	2560	3000	3980	4630
	Current	A	12.5	5.2	6.87	8
	COP	WW	3.66	3.61	3.68	3.67
Indoor fan motor	Motor Model		YDK90-6E	YDK90-6E	YDK125-6E	YDK125-6E
	Qty		1	1	1	1
	Input	w	143/116/100	143/116/100	174/145/121	174/145/121
	Capacitor	uF	3.5UF/450V	3.5UF/450V	5UF/450V	5UF/450V
	Speed(hi/mi/lo)	r/min	770/640/550	770/640/550	690/610/540	690/610/540
Indoor coil	Number of rows		2	2	3	3
	Tube pitch(a) x row pitch(b)	mm	21x13.37	21x13.37	21x13.37	21x13.37
	Fin spacing	mm	1.5	1.5	1.4	1.4
	Fin type		Hydrophilic aluminium	Hydrophilic aluminium	Hydrophilic aluminium	Hydrophilic aluminium
	Tube outside dia.and type	mm	Φ7,Inner grooved tube	Φ7,Inner grooved tube	Φ7,inner grooved tube	Φ7,Inner grooved tube
	Coil length x height x width	mm	1990x252x26.74	1990x252x26.74	2080x210x40.11	2080x252x40.11
	Number of circuits		12	12	10	12
Indoor air flow (Hi/Med/Lo)		m ³ /h	1545/1354/1187	1545/1354/1187	1750/1550/1350	2000/1700/1500
Sound level (sound pressure)		dB(A)	44/42/41	44/42/41	52/49/46	53/47/44
Throttle type			/	/	/	/
Indoor unit	Dimension (W x Dx H)(body)	mm	840x840x300	840x840x300	840x840x245	840x840x287
	Packing (W x Dx H)(body)	mm	900x900x320	900x900x320	900x900x265	900x900x292
	Dimension (W x Dx H)(panel)	mm	950x950x55	950x950x55	950x950x55	950x950x55
	Packing (W x Dx H)(panel)	mm	1035x1035x90	1035x1035x90	1035x1035x90	1035x1035x90
	Net/Gross weight(body)	kg	30/36	30/33.5	27/30.5	31/34
	Net/Gross weight	kg	5/8	5/8	5/8	5/8
Design pressure		MPa	4.2/1.5	4.2/1.5	4.2/1.5	4.2/1.5
Drainage water pipe dia.		mm	ODΦ32	ODΦ32	ODΦ32	ODΦ32
Refrigerant piping	Liquid side/ Gas side	mm	Φ9.52/Φ15.9(3/8"/5/8")	Φ9.52/Φ15.9(3/8"/5/8")	Φ9.52/Φ15.9(3/8"/5/8")	Φ9.52/Φ15.9(3/8"/5/8")
	Controller		RG51Q1/BGE	RG51Q1/BGE	Remote-RG51C/E	Remote-RG51C/E
Operation temperature	Cooling	℃	≥17	≥17	17~32	17~32
	Heating	℃	≤30	≤30	0~30	0~30

2. Dimensions

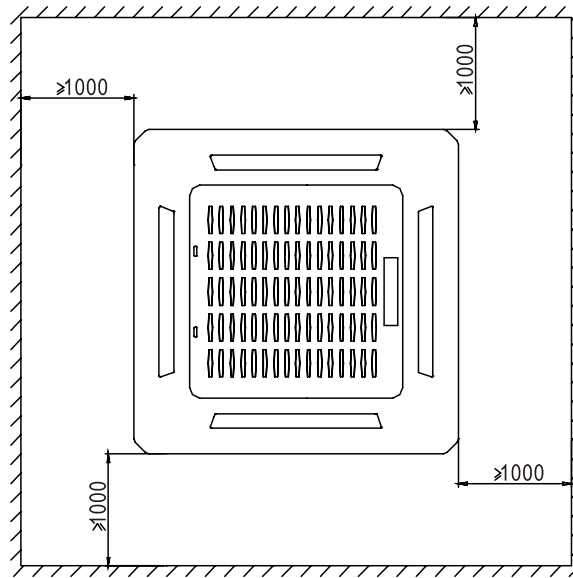
Model 12, 18





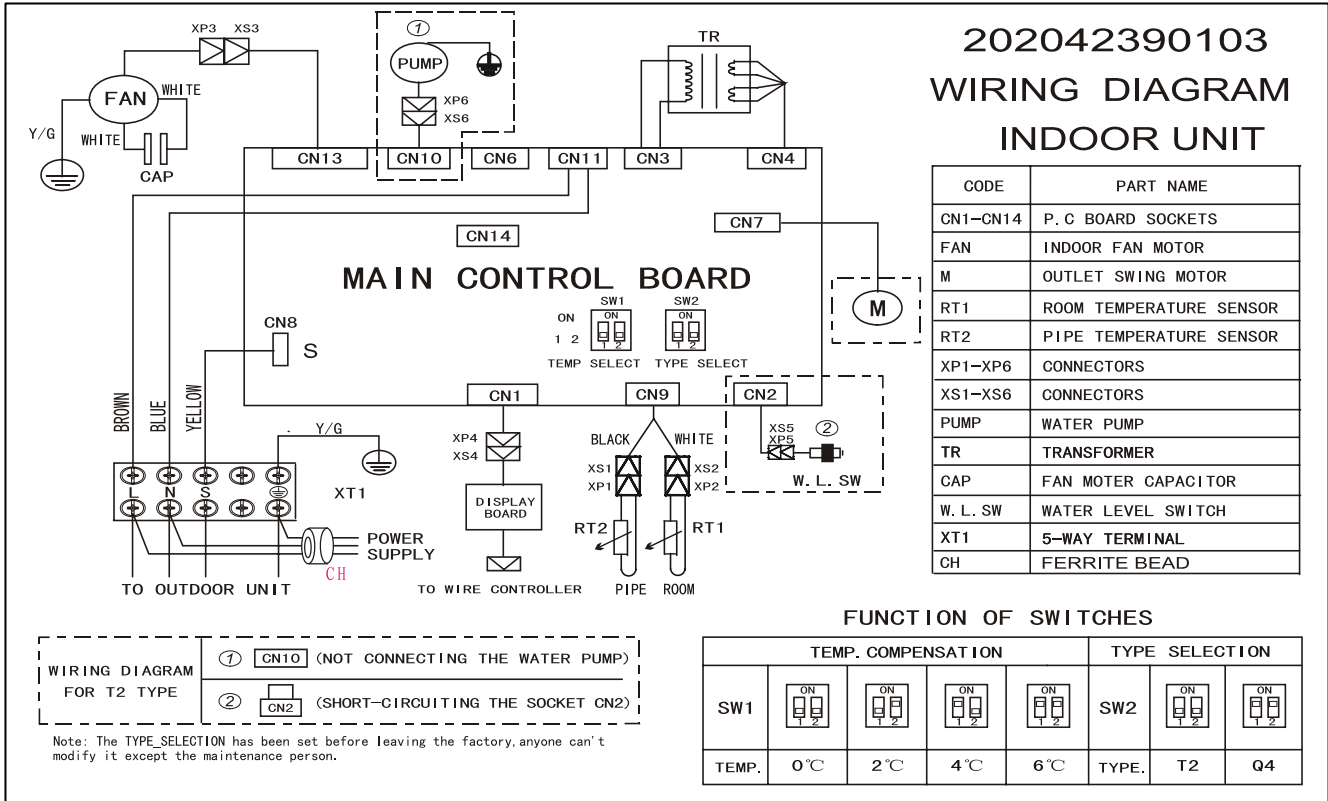
Model	A	H
24	230	>260
30-36	300	>330
48	245	>275
60	287	>317

3. Service Space

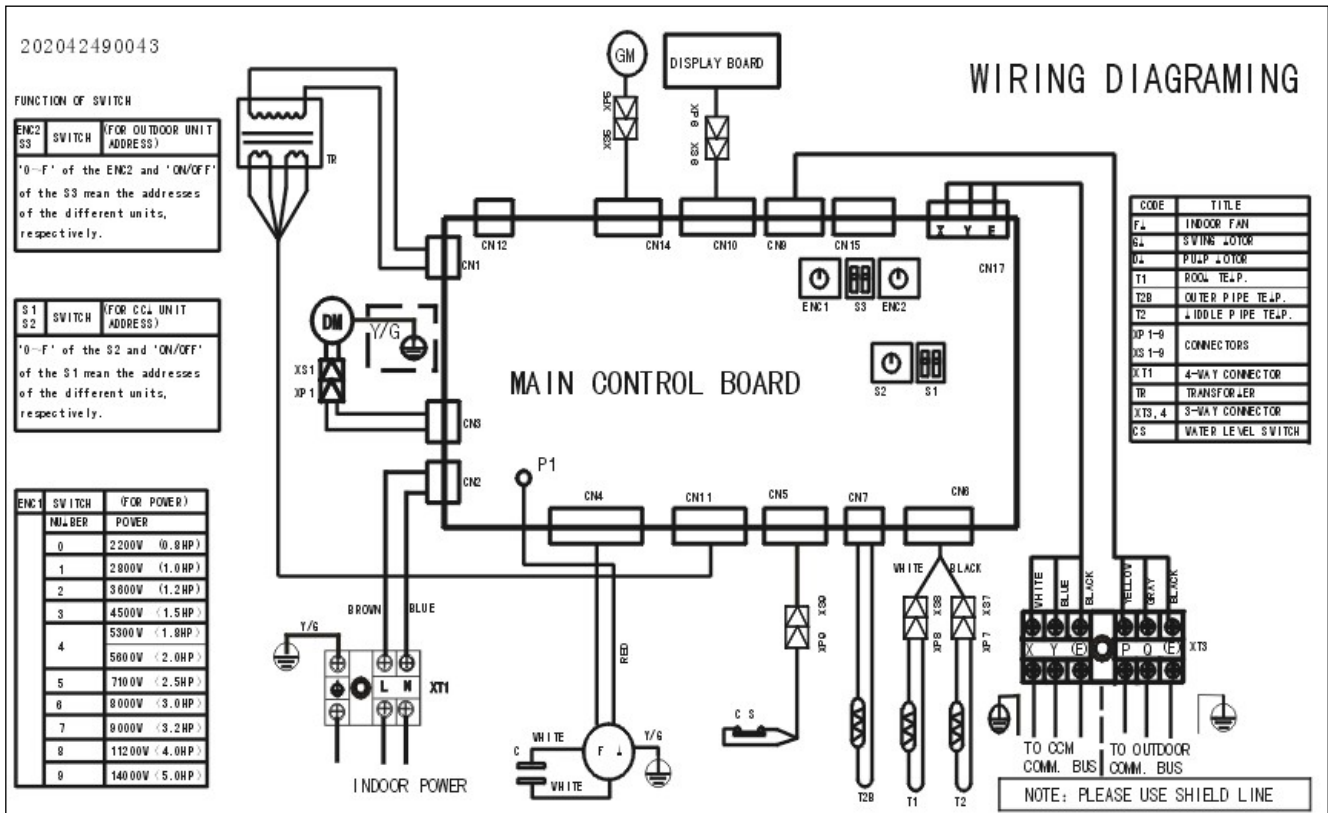


4. Wiring Diagrams

LXGICH4MD01213T4

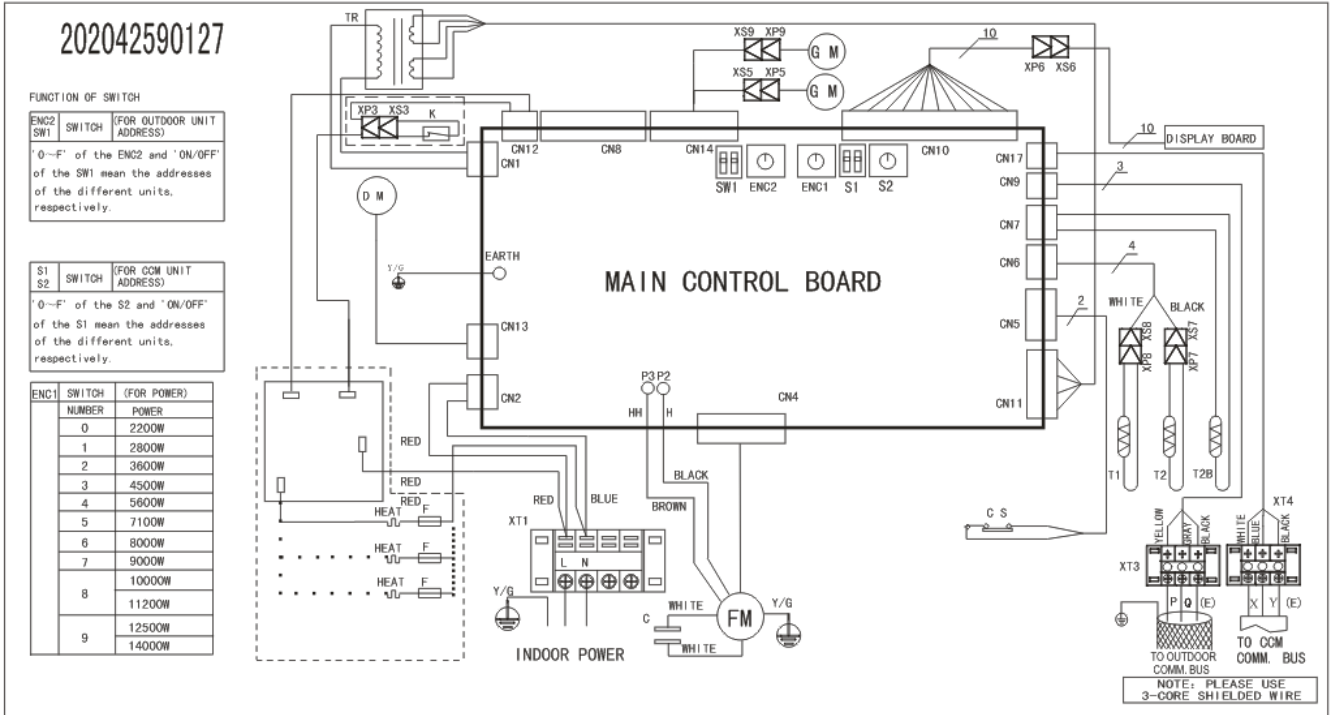


LXGICH4MD01813T4

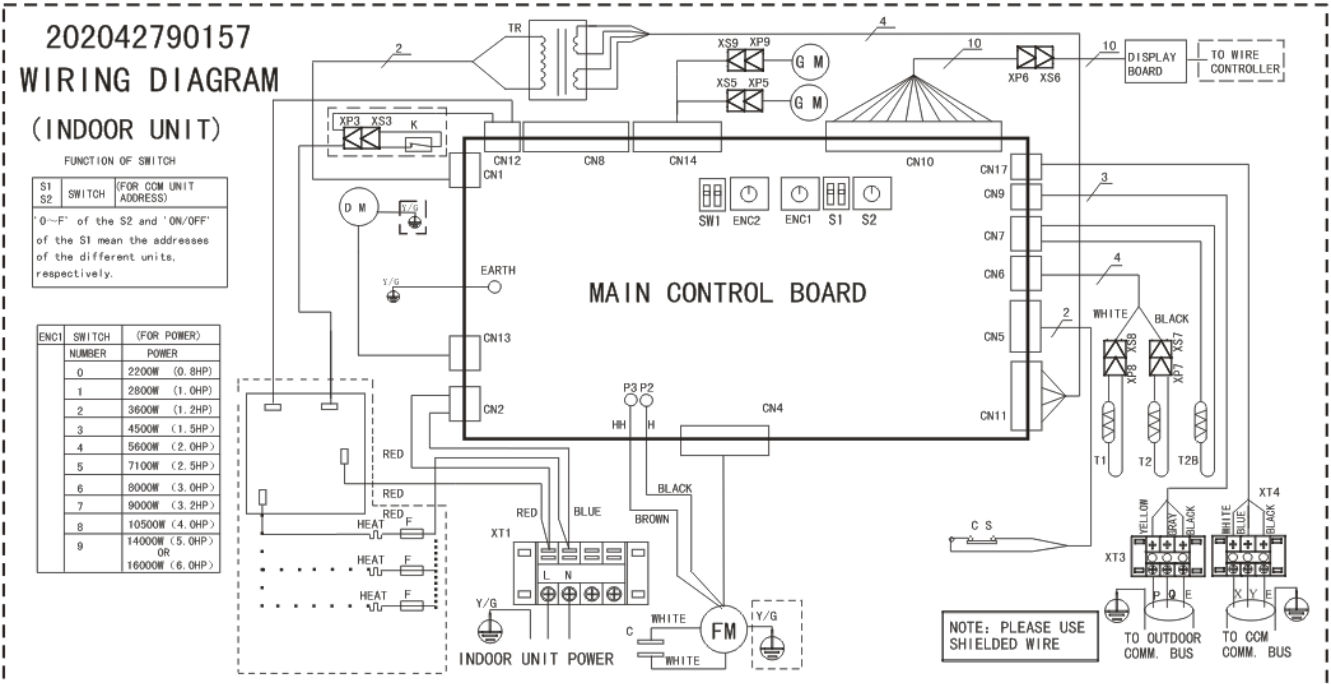


4. Wiring Diagrams

LXGICH4MD02413T4



LXGICH4MD03013T4



LXGICHMD03613T4

WIRING DIAGRAM

202042890195

FUNCTION OF SWITCH

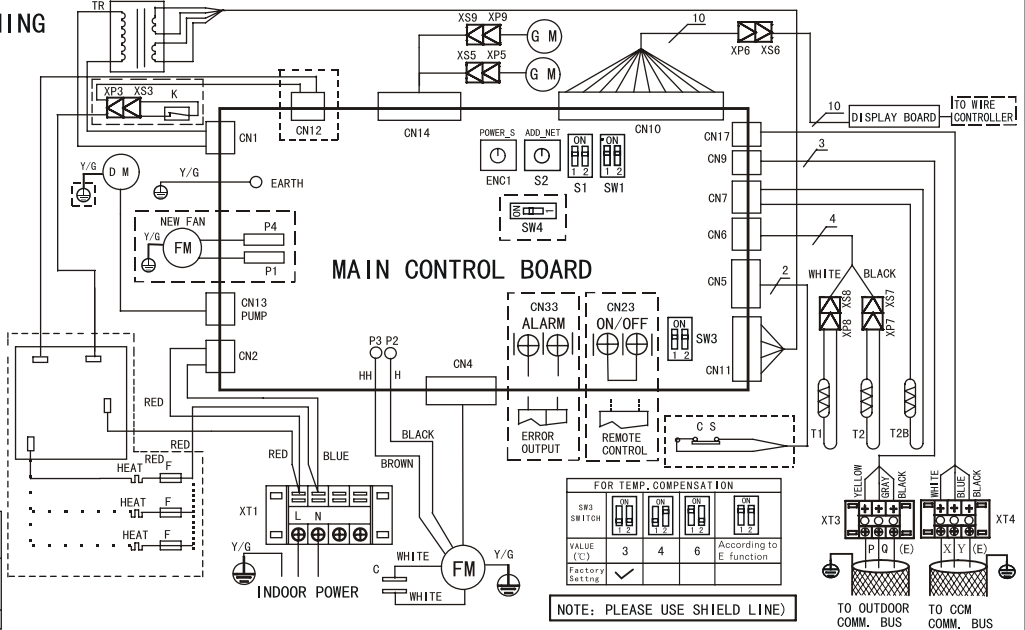
S1	SWITCH	(FOR CCM UNIT ADDRESS)
0	F	of the S1 mean the addresses of the different units, respectively.

S2	S1+S2	ADDRESS	S1+S2
0	0	32	32
1	1	47	47
2	2	16	16
3	3	48	48
4	4	31	31
5	5	63	63

SW4 SWITCH	ON	OFF
Memory	NO	YES

ENC1	SWITCH	(FOR POWER)
NUMBER	POWER	
4	5300W	
5	7100W	
6	8000W	
7	9000W	
8	10500W	
9	14000W	
A	16000W	

SW1 SWITCH (SELECT TEMP.)	ON	OFF	ON	OFF
TE1	28	30	Fan motor do not stop.	According to E function
TE2	32	35		
TE3	30	32		
TE4	15	24		
Factory Setting	✓			



LXGICH4MD04813T4

202042890190

INDOOR UNIT

FUNCTION OF SWITCH

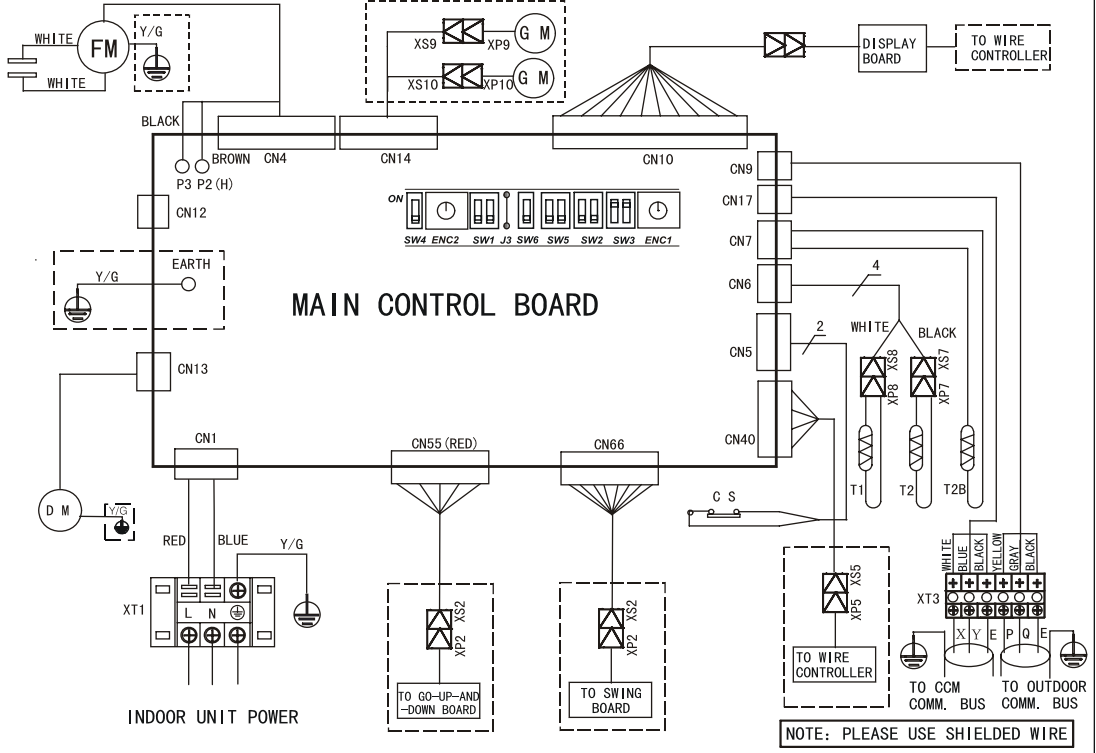
ENC1 SWITCH (FOR POWER)		
NUMBER	POWER	
0	2200W (0.8HP)	
1	2800W (1.0HP)	
2	3600W (1.2HP)	
3	4500W (1.7HP)	
4	5600W (2.0HP)	
5	7100W (2.5HP)	
6	8000W (3.0HP)	
7	9000W (3.2HP)	
8	10500W (4.0HP)	
9	14000W (5.0HP)	
	16000W (6.0HP)	

SW2 SWITCH FOR PREVENT COLD WIND		
ON STATE	MODE	
<input type="checkbox"/>	1	2
<input type="checkbox"/>	3	4

SW3 SWITCH FOR TEMP. COMPENSATION		
ON STATE	VALUE	
<input type="checkbox"/>	8	4
<input type="checkbox"/>	6	3

SW4 SWITCH FOR MAIN-SLAVE SETTING		
ON STATE	MODE	
<input type="checkbox"/>	MAIN	NO SLAVE
<input type="checkbox"/>	MAIN	SLAVE

SW4 SWITCH FOR POWER LOST REMEMBER		
ON STATE	MODE	
<input type="checkbox"/>	REMEMBER	NO_REMEMBER



LXGICH4MD06013M4

WIRING DIAGRAM

INDOOR UNIT

202042990086

ENC1 SWITCH (FOR POWER)		
NUMBER	POWER	
0		
1		
2		
3		
4	5300W (2.0HP)	
5	7100W (2.5HP)	
6		
7	9000W (3.2HP)	
8	10500W (4.0HP)	
9	14000W (5.0HP)	
A	16000W (6.0HP)	

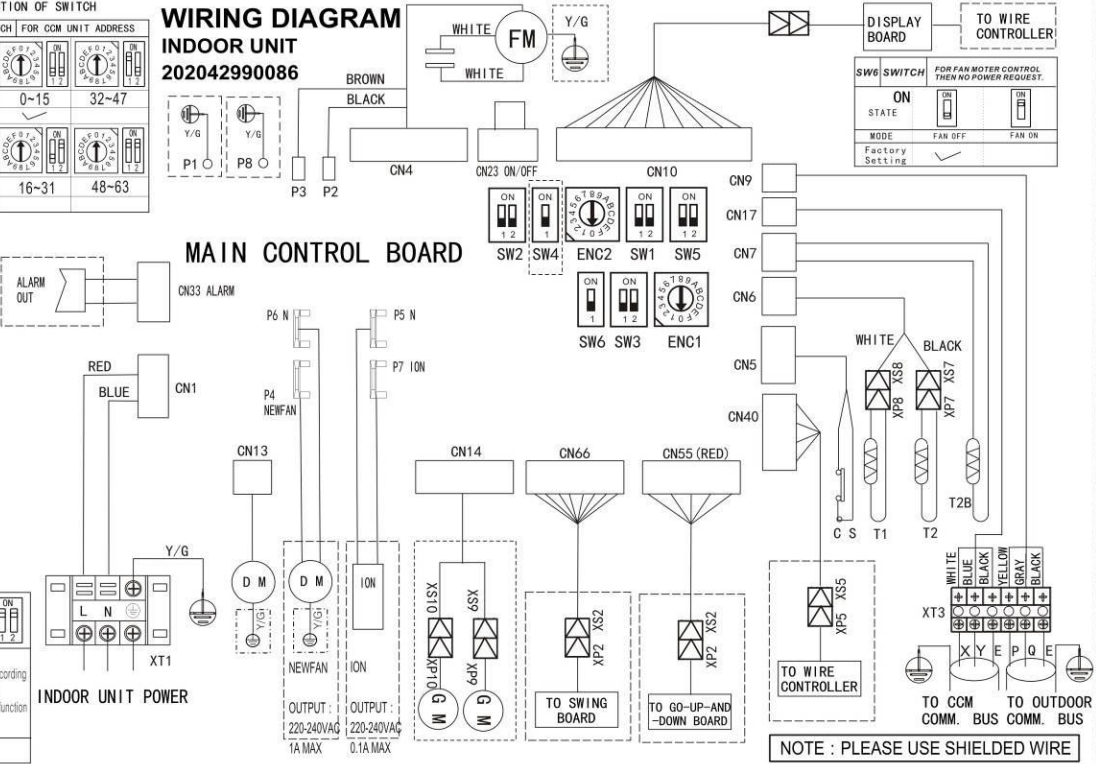
FUNCTION OF SWITCH			
SWITCH FOR CCN UNIT ADDRESS		SWITCH FOR FAN MOTOR CONTROL THEN NO POWER REQUEST	
ENC2	SW1	SW6	SW3
ADDRESS	0~15	Factory Setting	✓
ENC3	SW4	Factory Setting	✓
ADDRESS	16~31	Factory Setting	✓

SW2 SWITCH FOR TEMP. COMPENSATION		
ON STATE	VALUE	
<input type="checkbox"/>	3	4
<input type="checkbox"/>	6	E function

SW4 SWITCH FOR POWER LOST REMEMBER		
ON STATE	MODE	
<input type="checkbox"/>	REMEMBER	NO_REMEMBER

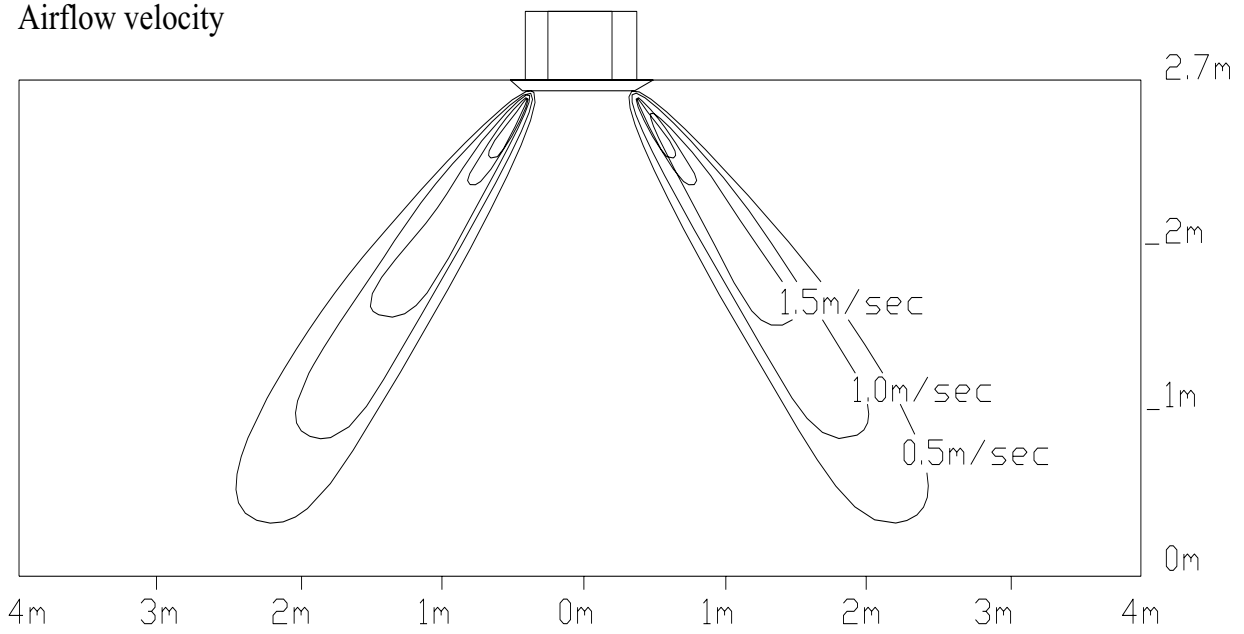
SW5 SWITCH FOR MAIN-SLAVE SETTING		
ON STATE	MODE	
<input type="checkbox"/>	MAIN	NO SLAVE
<input type="checkbox"/>	MAIN	SLAVE

SW2 SWITCH (SELECT TEMP.)		
ON STATE	TE	
<input type="checkbox"/>	TE1	TE2
<input type="checkbox"/>	TE3	TE4
<input type="checkbox"/>	TE5	TE6



5. Air Velocity and Temperature Distributions(Reference Data)

Airflow velocity



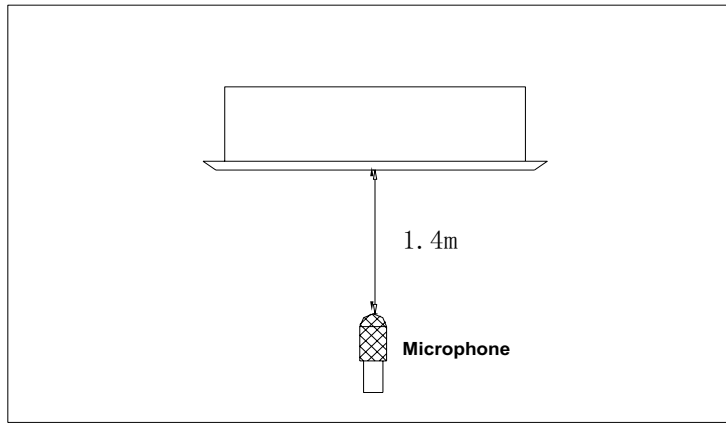
6. Electric Characteristics

Model	Indoor Unit				Power Supply
	Hz	Voltage	Min	Max	MFA
LXGICH4MD01213T4	50	220-240	198	254	20
LXGICH4MD01813T4	50	220-240	198	254	15
LXGICH4MD02413T4	50	220-240	198	254	15
LXGICH4MD03013T4	50	220-240	198	254	15
LXGICH4MD03613T4	50	220-240	198	254	15
LXGICH4MD04813T4	50	220-240	198	254	15
LXGICH4MD06013M4	50	220-240	198	254	15

Note:

MFA: Max. Fuse Amps. (A)

7. Sound Levels



Model	Noise level dB(A)		
	H	M	L
LXGICH4MD01213T4	42	39	35
LXGICH4MD01813T4	45	41	38
LXGICH4MD02413T4	42	41	39
LXGICH4MD03013T4	44	42	41
LXGICH4MD03613T4	44	42	41
LXGICH4MD04813T4	53	47	44
LXGICH4MD06013M4	53	47	44

9. The Specification of Power

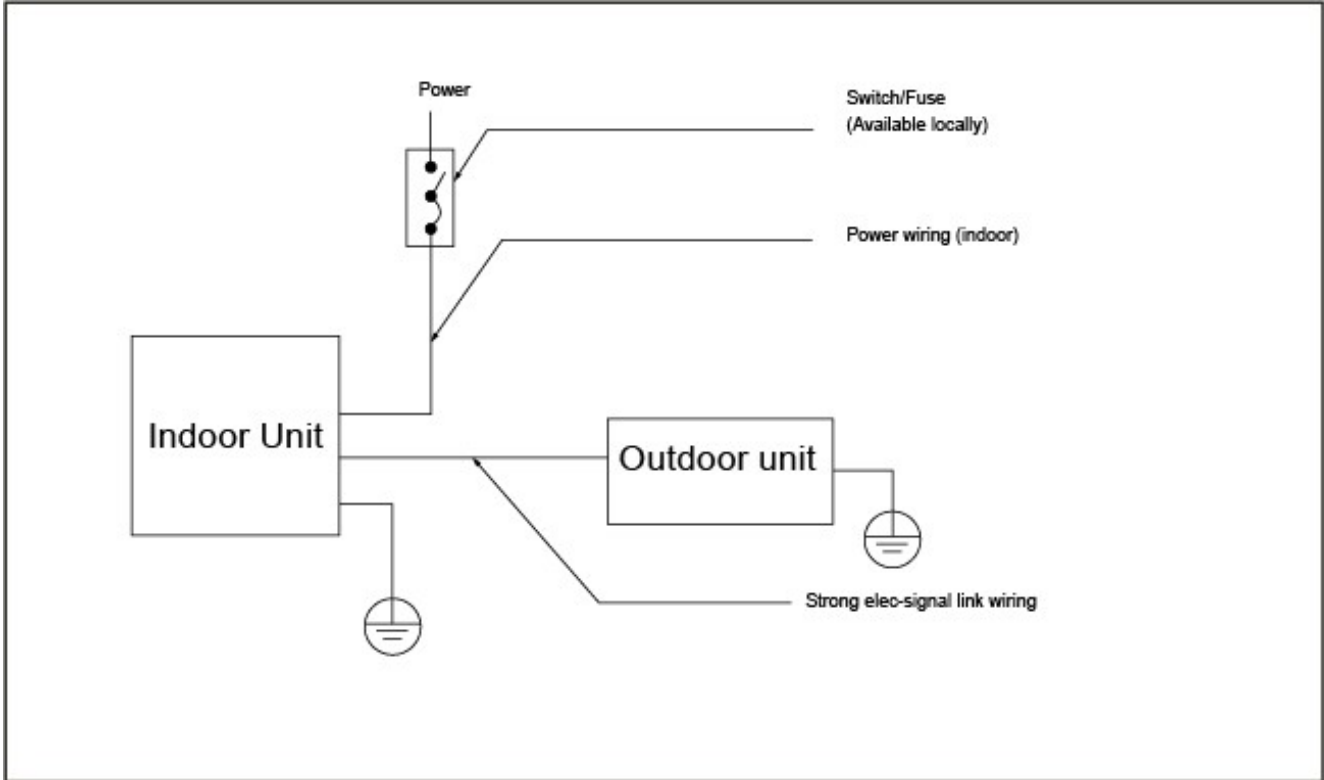
Model		12000Btu/h	18000 Btu/h
INDOOR UNIT POWER	Phase	1-phase	1-phase
	Frequency and Voltage	220-240V, 50Hz	220-240V, 50Hz
	POWER WIRING (mm ²)	3×1.5	3×1.0
	CIRCUIT BREAKER (A)	20	15
OUTDOOR UNIT POWER	Phase	—————	1-phase
	Frequency and Voltage	—————	220-240V, 50Hz
	POWER WIRING (mm ²)	—————	3×2.5
	CIRCUIT BREAKER (A)	—————	30
Indoor/Outdoor Connecting Wiring (Weak Electric Signal) (mm ²)		—————	3×0.5
Indoor/Outdoor Connecting Wiring (Strong Electric Signal) (mm ²)		4×1.5	—————

Model		18000-24000Btu/h	30000 Btu/h	36000Btu/h	48000Btu/h	60000 Btu/h
INDOOR UNIT POWER	Phase	1-phase	1-phase	1-phase	1-phase	1-phase
	Frequency and Voltage	220-240V, 50Hz	220-240V, 50Hz	220-240V, 50Hz	220-240V, 50Hz	220-240V, 50Hz
	POWER WIRING (mm ²)	3×1.0	3×1.0	3×1.0	3×1.0	3×1.0
	CIRCUIT BREAKER / FUSE (A)	15/10	15/10	15/10	15/10	15/10
OUTDOOR UNIT POWER	Phase	1-phase	1-phase	1-phase	1-phase	1-phase
	Frequency and Voltage	220-240V, 50H	220-240V, 50H	220-240V, 50H	220-240V, 50H	220-240V, 50H
	POWER WIRING (mm ²)	3×2.5	3×2.5	3×4.0	3×4.0	3×4.0
	CIRCUIT BREAKER / FUSE(A)	30/20	40/30	40/30	40/35	50/40
Indoor/Outdoor Connecting Wiring(Weak Electric Signal) (mm ²)		3×0.5	3×0.5	3×0.5	3×0.5	3×0.5
Indoor/Outdoor Connecting Wiring(Strong Electric Signal) (mm ²)		—————	—————	—————	—————	—————

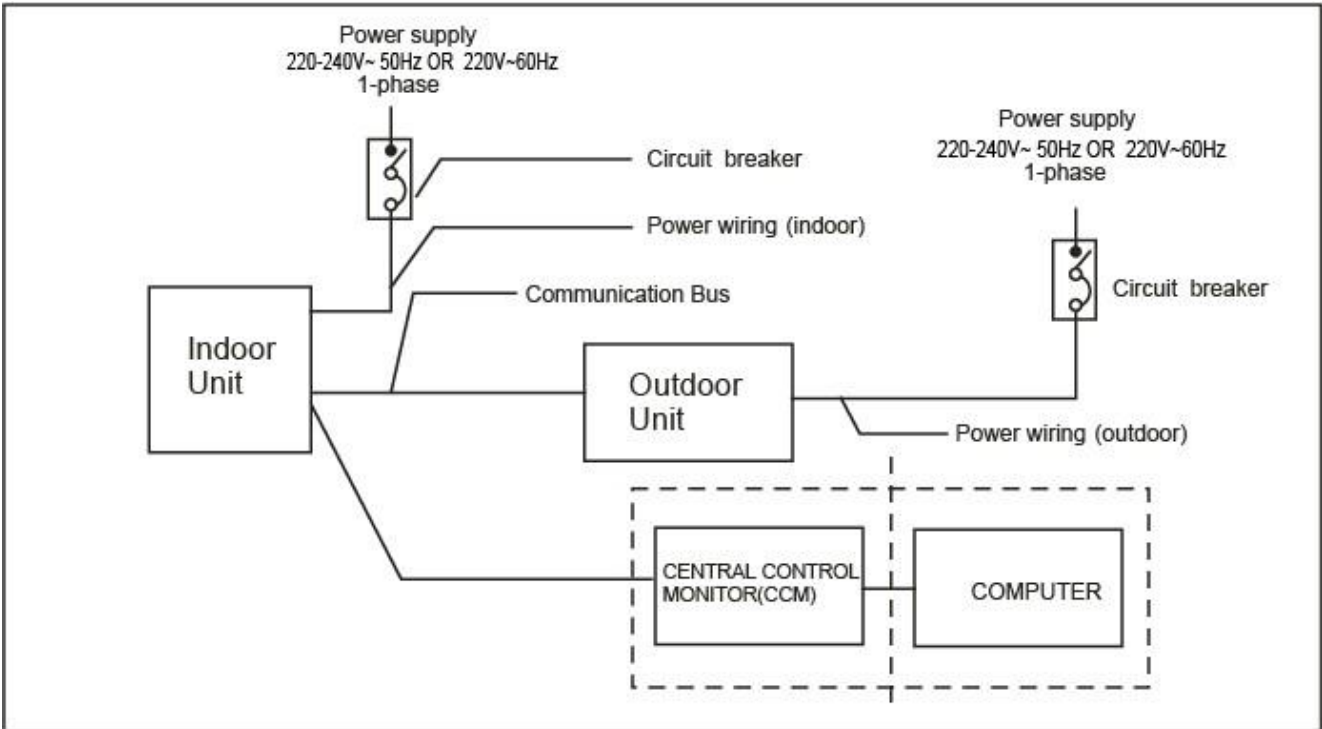
Model		36000Btu/h	48000-60000Btu/h
INDOOR UNIT POWER	Phase	1-phase	1-phase
	Frequency and Voltage	220-240V, 50Hz	220-240V, 50Hz
	POWER WIRING (mm ²)	3×1.0	3×1.0
	CIRCUIT BREAKER/FUSE (A)	15/10	15/10
OUTDOOR UNIT POWER	Phase	3-phase	3-phase
	Frequency and Voltage	380-415V, 50H	380-415V, 50H
	POWER WIRING (mm ²)	5×2.5	5×2.5
	CIRCUIT BREAKER/FUSE(A)	30/20	30/25
Indoor/Outdoor Connecting Wiring (Weak Electric Signal) (mm ²)		3×0.5	3×0.5
Indoor/Outdoor Connecting Wiring (Strong Electric Signal) (mm ²)		—————	—————

10. Field Wiring

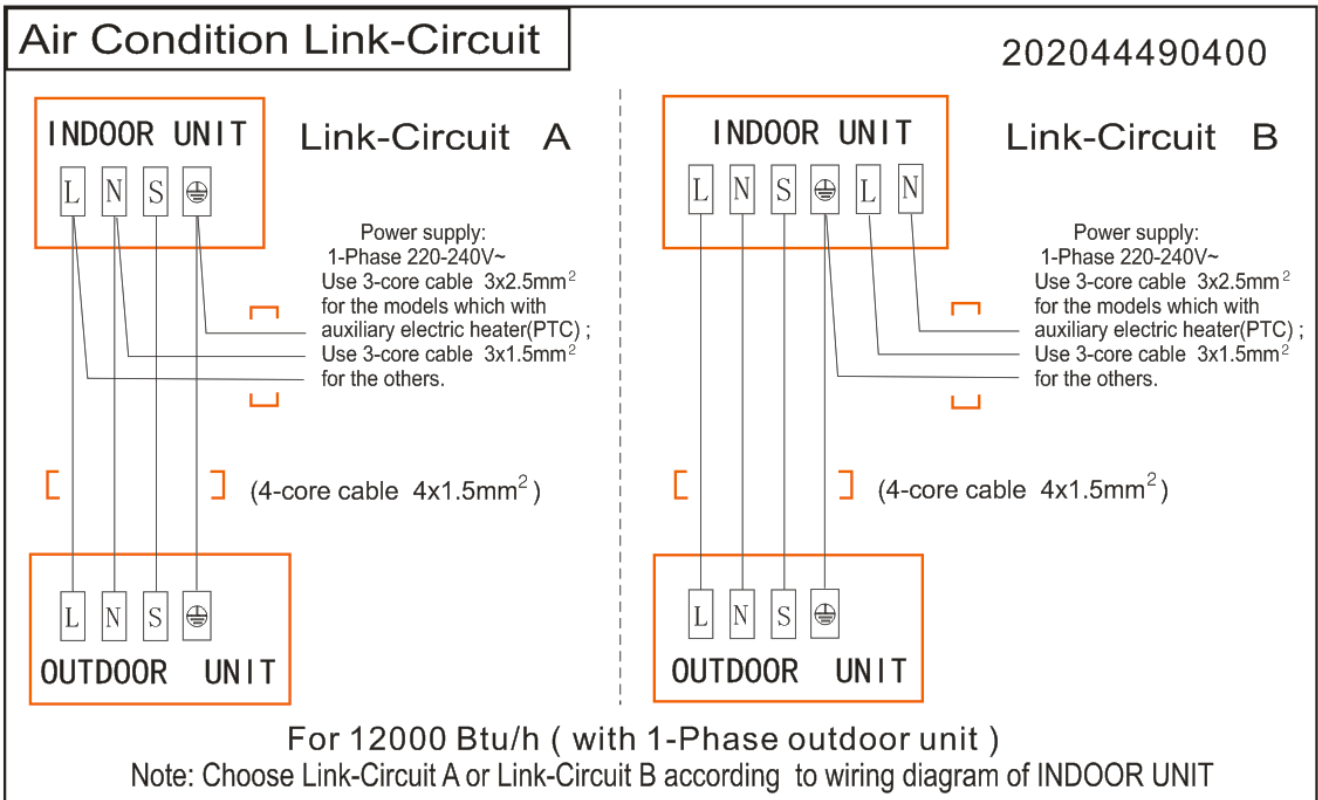
LXGICH4MD01213T4



LXGICH4MD01813T4 TO LXGICH4MD060M4



LXGICH4MD01213T4



LXGICH4MD01813T4 TO LXGICH4MD060M4

